



case studies

customer success stories from the paramics community

Project

Shared Space Modelling,
Berne, Switzerland

Organization

Crowd Dynamics

Sector

Shared Space Modelling,
Pedestrian Simulation

Objective

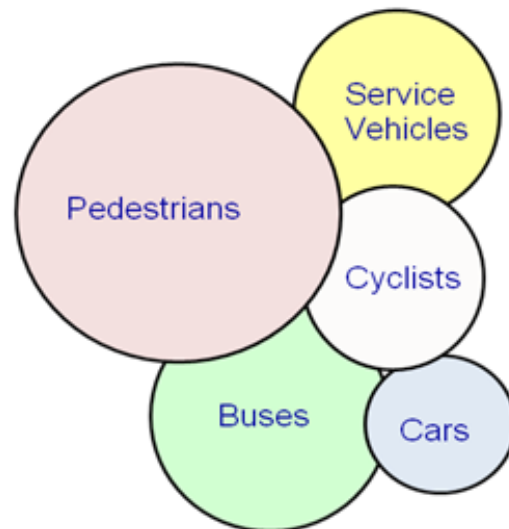
Validation of on-street shared
space facilities

Contact Point

www.crowddynamics.com

Shared Space Modelling, Berne, Switzerland

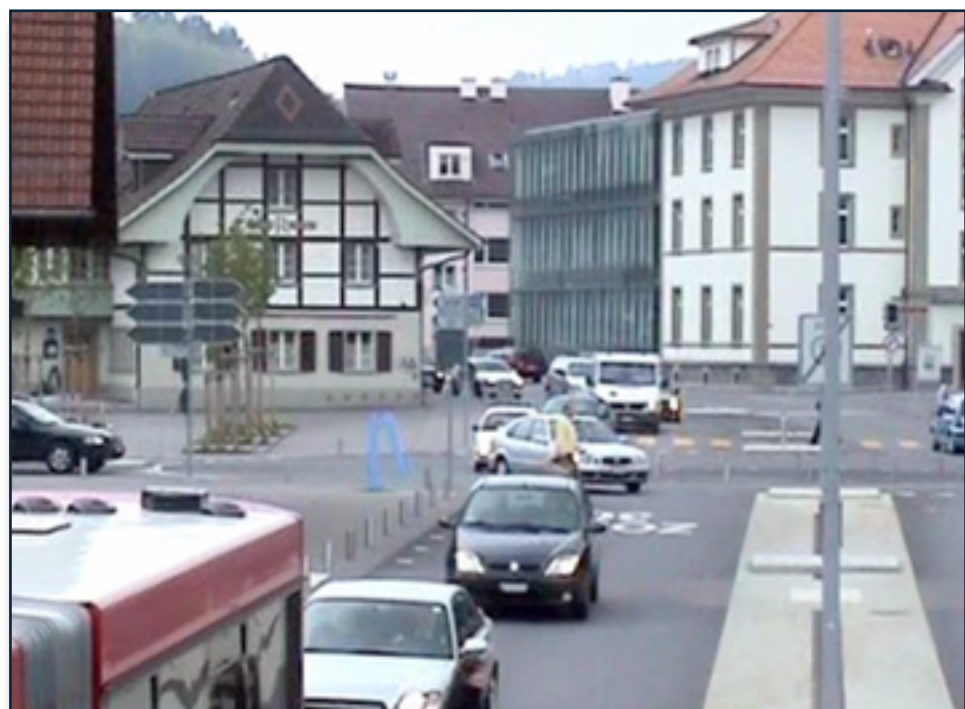
Complex urban spaces involving many different parties can be designed and engineered in different ways. A modern approach, popular in certain areas of Europe and being considered more and more in the UK, is the concept of Shared Space.



The sharing of space by many different types of users without normal road markings and signs is the concept of shared space. These different modes interact freely in a space without rigid rules being enforced by conventional traffic engineering solutions.

Often this type of design will be compared alongside more traditional means such as traffic lights and pedestrian crossings.

The combination of traffic and pedestrian modeling can make comparative analysis easy. Traffic engineers in Berne, Switzerland have proven that their concept of shared space works. One particular street is shown below:



This high street was modelled using traffic and pedestrian counts. It was then checked against recorded videos of the interactions to show that this space could be modelled correctly.



The model was shown to be validated in and around Berne. This concept has then further been applied to different situations where a shared space scheme was considered as an option and the visualisations shown above were used to promote the potential for such schemes.